

CLARK MASTS™ *Type 72 Mast System*



TELESCOPIC & SECTIONAL MAST SYSTEMS



Clark Masts Systems has been designing and manufacturing telescopic and sectional mast systems for more than 50 years and has built up an extensive range of products that are used by civil and military authorities all around the world.

Design, development and testing are fundamental to the success of our organisation. This leaflet details our sectional Type 72 Mast Systems which is produced to our exacting standards of quality.

The standard range is available from 8.40 to 20.20 metres.

Clark Masts are used by all of the world's largest system integrators.

Type 72 Mast System

General Description



- A range of heights up to 20 metres.
- Headload capacity up to 55 kg.
- MIL STD 810C Qualified.
- 3" diameter aircraft grade aluminium mast sections.
- Compact, man portable kit in canvas bags for transport.
- 3 legged erection gear.
- Mechanical mast lifting hoist.
- Guy winch controller system with stainless steel guy wire.
- Adjustable feet.
- Shelter mounting kit available for mounting mast on shelters fitted with standard ISO corner blocks.

The Type 72 mast is based upon the Type 73 mast (which has served military forces around the world since the 1970s) and sets the standard for a modular mast system up to 20 metres in height and lifting headloads of up to 55 kg at 8 metres.

The mast sections have an outside diameter of 3 inches and are raised one at a time through the leg mounted mast guide box using the fail-safe hoist and cross-pin, giving the operator complete peace of mind.

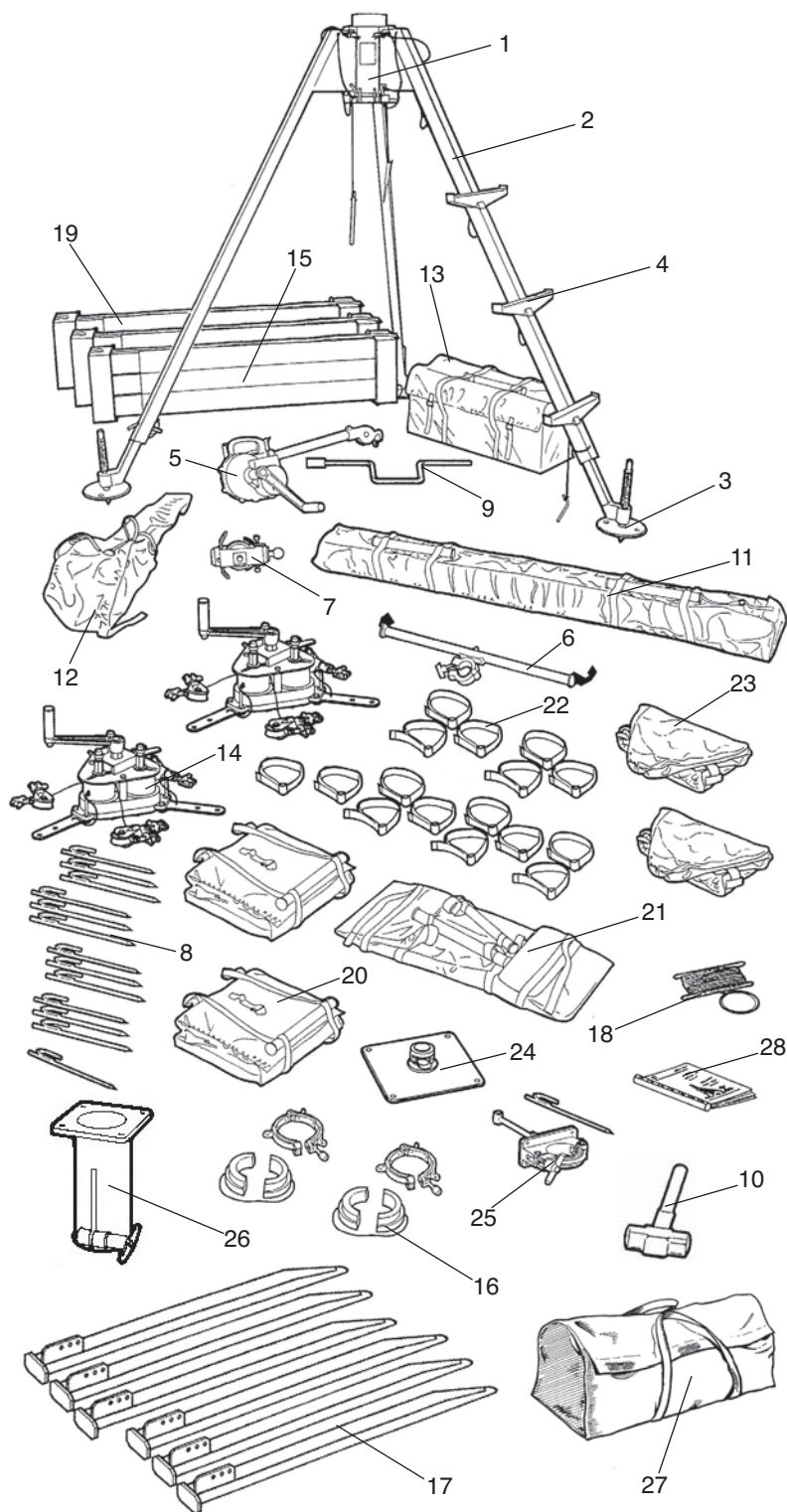
Tensioning of the guys is controlled by the guy controller which keeps the mast that is being raised vertical and under tension at all times.

Type 72 Mast System

Kit Components

Standard Type 72 Kit Components

The Type 72 Kit shown below is a 15 metre mast Cat. No. 41013. The number of mast sections, mast section carriers, pickets, guy collars, spikes and other equipment in the kit varies according to the actual height of the mast to be erected.



Item	Clark Part No.	Title	Qty per Kit
1	41948	Mast Guide Box	1
2	18020	Leg Assembly	3
3	18114	Foot Assembly	3
4	10772	Step Assembly	3
5	41950	Hoist	1
6	13973	Hoist Support Bar	1
7	41949	Lifting Block	1
8	6409	Spike	13
9	5373	Foot Adjustment Brace	1
10	B2621	1.8 kg Hammer	1
11	18035	Leg Bag	1
12	18026	Hoist Bag	1
13	18027	Equipment Bag	1
14	13674	Guy Winch Kit	2
15	41946	Type 72 Mast Section	16
16	41951	Guy Collar Set	2
17	2484	24" Picket	6
18	18152	Picket Radius Line	1
19	41957	Mast Section Carrier	3
20	5810	Winch Bag	2
21	2932	Accessory Bag	1
22	5809	Feeder Cable Strap	16
23	41522	Guy Winch Cover	2
24	21954	Field Base	1
25	41962	Brake Arm Assembly	1
26	41960	Top Flange	1
27	29840	Accessory Bag	1
28	N/A	Handbook	1

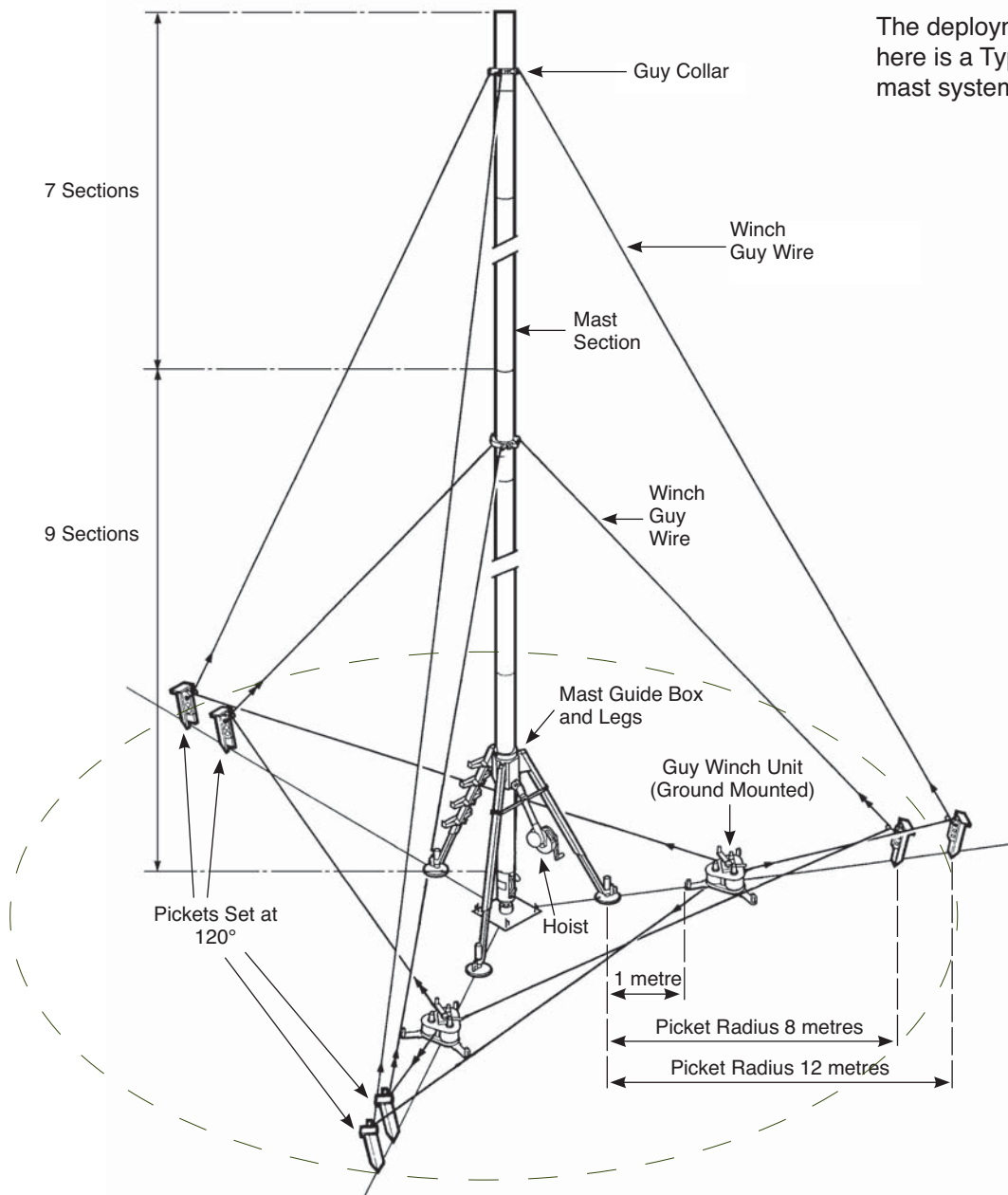
Packed Kit



Type 72 Mast System

Range Table

Type 72 Masts offer versatile heavy duty solutions for lifting headloads from 30 kg to 55 kg. Choose between a wide range of models to suit your application.



The deployment shown here is a Type 72, 15 metre mast system.

Cat. No.	Model	Extended Height	Number of Sections	Maximum Vertical Headload	Cat. No.	Model	Extended Height	Number of Sections	Maximum Vertical Headload
41010	72-8	8.40 m	9	55.00 kg	41013	72-15	14.75 m	16	40.00 kg
41011	72-10	10.20 m	11	50.00 kg	41014	72-18	18.40 m	20	35.00 kg
41012	72-12	12.00 m	13	45.00 kg	41015	72-20	20.20 m	22	30.00 kg

Type 72 Mast System

Specifications

Operational Information

	72-8 41010	72-10 41011	72-12 41012	72-15 41013	72-18 41014	72-20 41015
Number of Winches	1	1	1	2	2	2
Total Weight of Mast Kit	148 kg	152 kg	166 kg	191 kg	213 kg	222 kg
Number of operators required for normal erection	2	2	2	3	3	3
Typical time to erect the mast with the above team of operators	16 mins	18 mins	24 mins	32 mins	36 mins	40 mins
Typical time to lower and pack the mast with the above team of operators	14 mins	16 mins	17 mins	18 mins	19 mins	20 mins



The guy winch unit allows control of three guys by one person simultaneously or individually.



Mast hoist for raising mast sections, geared for ease of operation and only reversed by push button brake with automatic centrifugal descent control brake.



Angled steel picket complete with shackles for attaching the snaphook of the guy pulley from the winch.



Large foot assembly for levelling the mast on sloping ground. The foot has holes for ground spikes.

Materials Specifications

Mast Sections: Seamless drawn aluminium 10 SWG ENAW6082T6.

Paint: BS381C-361 or NATO Green

Canvas Covers and Bags: Cloth-coated polyurethane, olive drab to MoD Spec UK/SC/3501A.

Winch Guy Cables: Stainless steel.

Castings: Aluminium alloy, gravity die cast using ingots to BS 1490 grade LM6.

Finishes: Mast sections are anodised and dyed to a choice of colours. The steel fittings are zinc plated and passivated.

Erection Site Requirements

Maximum Slope of Ground: Slope should not exceed 24°.

Operating Temperature Range: -40°C to +55°.

All Type 72 masts are MIL STD 810C Qualified and have been in military use since introduction.

Type 72 Mast System

Accessories



Cat. No. 28527

FEEDER CABLE STRAP

A simple and effective way of securing feeder cables to the mast.

Cat. No. 45220

SIDE MOUNTING ADAPTOR

A general purpose attachment. The Adaptor clamps directly round the mast section. Standard antenna spigot 40 mm diameter.



Weight : 0.45 kg.

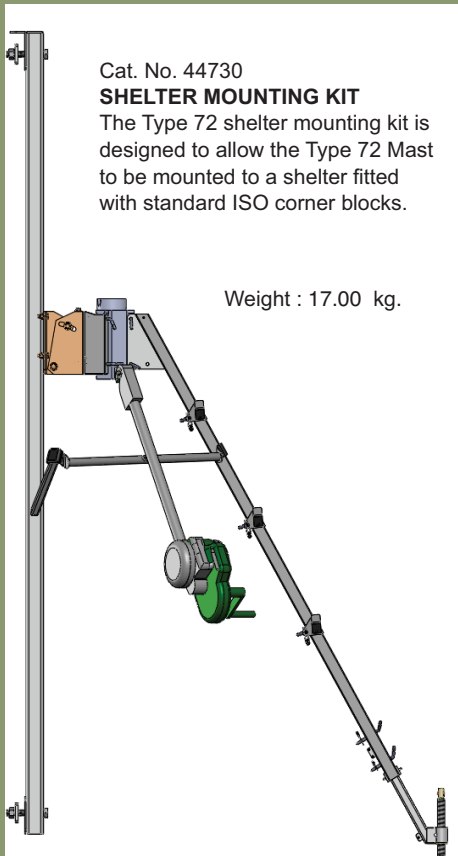


Cat. No. 41960

MAST TOP FLANGE FITTING

Fits over the top section of the mast giving a mounting flange 152 mm Square.

Weight : 1.53 kg.



Cat. No. 44730

SHELTER MOUNTING KIT

The Type 72 shelter mounting kit is designed to allow the Type 72 Mast to be mounted to a shelter fitted with standard ISO corner blocks.

Weight : 17.00 kg.



Cat. No. 5242

FLANGED ANTENNA SPIGOT

Adapts the mast top flange fitting to give a spigot for antenna attachment.

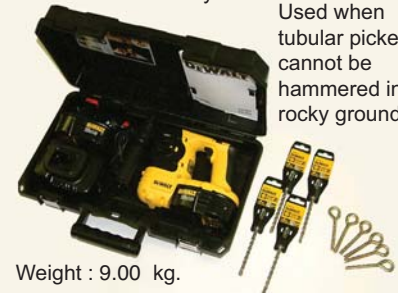
Weight : 1.70 kg.

Cat. No. 44538

ROCK FIXING KIT

Comprising of a powerful cordless hammer drill and Ankerbolt eyes.

Used when tubular pickets cannot be hammered into rocky ground.



Weight : 9.00 kg.



Cat. No. 30708

LIGHT ANTENNA TILTER

A mast head fitting operated from the ground by a special ball rope to tilt antennas up or down 20°. Suitable for antennas up to 10 kg.

Weight : 1.58 kg.

In the deployment below the Light Antenna Tilter is shown in use with the Light Antenna Rotator (below left).



Cat. No. 18038

WINCH PROTECTION COVER

When fitted protects the guy winch unit from rain, snow and ice.



Cat. No. 6508

LIGHT ANTENNA ROTATOR

Fits on the mast top and is operated from ground by ball rope. 360° rotation. Essential if a mast carries two antennas which need to be pointed independently. Suitable for antennas up to 10 kg.

Weight : 1.20 kg.



LIGHTNING PROTECTION KIT

A range of solutions are available to suit customer requirements.



CLARK MASTSTM

All details given in this publication are approximate
and may be subject to change without notice.

For sales and technical assistance:

CLARK MASTS ASIA PACIFIC PTY LTD

1 / 8-12 Lieber Grove, Carrum Downs, Victoria, 3201, Australia

Tel: **+61 (0)3 8682 8632**

Fax: +61 (0)3 9775 0419

Email: **sales@clarkmasts.com.au**

www.clarkmasts.com.au

Clark Masts is a division of Clark Masts Systems Ltd.

Doc. Ref. 72SL-E-CMS-08.09.2015

CLARK MASTS SYSTEMS LTD, 18-20 Ringwood Road, Binstead, Isle of Wight, PO33 3PA, UK
Tel: +44 (0)1983 563691/567090 Fax: +44 (0)1983 566643 E-mail: sales@clarkmasts.com
Website: www.clarkmasts.com

"World Headquarters Design and Manufacturing Centre"